

[327_{v1}] R-55 Lock + Acoustic

CONDITIONS	SUBSTRATES	ACCESSORIES	INSTALLATION
------------	------------	-------------	--------------

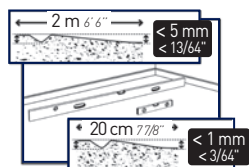
LAYING CONDITIONS

SUBSTRATE EVENNESS	Flatness requirement: < 5 mm / 2 metre ruler and < 1 mm / 20 cm ruler	Flat, clean, sound, dry and solid substrate.
STORAGE	At least 24 hours before laying	Store the floor covering in the room in which it is going to be laid.
LAYING TEMPERATURE	10°C < T < 30°C	Ideally 20°C.
PERIMETER EXPANSION GAP	8 to 15 mm	Around the edges of the room, permanent installations or heavy equipments (e.g. columns, island stands) and door frames (8 mm minimum). Over 8 linear meters, increase progressively the perimeter expansion gap up to 15 mm for 20 linear meters. The gap must be covered by a finishing profile. Wet rooms (e.g. bathrooms): MS Polymer or PU sealant under the finishing profile.
DIVISIONS	Every 20 linear metres or surface area > 400 m ²	Each closed room or premises must be considered separately. Divide the tiles/planks with an expansion gap covered with a Romus finishing profile.
DIRECT SUNLIGHT (SUNNY AREAS, BAY WINDOWS, SKYLIGHTS, SKYDOMES, ETC.) OR OTHER HEAT SOURCES	Only if floor temperature < 60°C	Loose laying is allowed as long as the ambient temperature is regulated. In order to prevent the floor temperature from reaching excessive values up to 60°C or above, direct sunlight on the floor should be obscured by curtains, blinds or other suitable protection
VERANDA / CONSERVATORY	Prohibited	Prohibited, whatever the substrate.
FIRST USE	Immediately after installation	

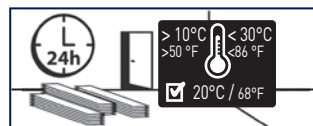
IMPORTANT - planks and tiles have various grade of colour and gloss in the same batch to be more natural

USAGE CONDITIONS

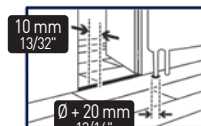
USAGE TEMPERATURE	8°C < T < 40°C	
STATIC LOADS	< 30 kg/cm ² and < 200 kg/support	Do not use rubber end caps. Use flat (not tapered) end caps without any pattern that are suitable for PVC. Use end caps on furniture legs.
CASTOR CHAIRS	PVC-compatible castors according to EN 12529	Recommendation: protective mat beneath castor chairs.



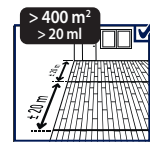
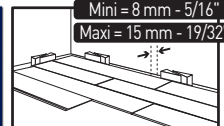
SUBSTRATE EVENNESS



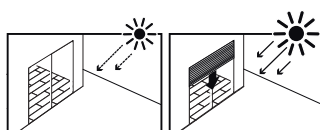
STORAGE



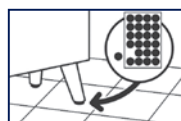
PERIMETER EXPANSION GAP



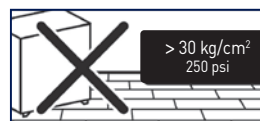
DIVISIONS



DIRECT SUNLIGHT



STATIC LOADS



MAINTENANCE AND PLANK REPLACEMENT

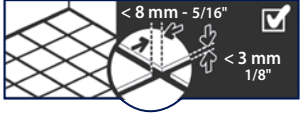
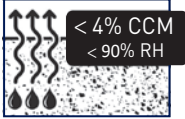
IMPORTANT : The information in this document is valid from 04/12/2025 and is subject to change without prior notice. As we carry out continuous technical improvements, our customers should check with us that this document is still in force before starting any work.

[327_{v1}] R-55 Lock + Acoustic

CONDITIONS	SUBSTRATES	ACCESSORIES	INSTALLATION
------------	-------------------	-------------	--------------

The preparation of the substrate must comply with the current relevant standards in the country of use.
 For any information on product properties and usages, please refer to its technical datasheet: www.gerflor.com.

SUBSTRATE	CONDITIONS For installing this floor covering	
Concrete floor, painted concrete, levelling compound, cement based screed, anhydrite (calcium sulphate)-based screed	✓	Moisture content: Cement based substrate: < 4% CCM, 90% RH - Anhydrite-based substrate: < 0.5%. If necessary, prepare the support and apply a smoothing compound to eliminate any irregularities
Ceramic tiles	✓	If tile joints < 8mm wide and < 3mm deep, and < 1mm unevenness. Otherwise, apply a grouting product or levelling compound.
Glued compact PVC from 2015 or younger / rubber / linoleum floorings	✓	After examination and repair depending on the condition of the floor covering. If more than 10% is in bad condition, complete removal is necessary followed by new substrate preparation. Removal of older PVC than 2015 are mandatory if it not have a PUR embossing.
Textile floor covering (carpet) / foam or textile-backing PVC floorings	✗	Complete removal.
Vinyl asbestos tiles	!	Subject to compliance with applicable regulations.
Acoustic underlayers	✗	Complete removal.
Glued or floating parquet / laminated floor / floating wood based panels	✗	Prohibited (complete removal).
OSB	!	Apply a fiber-reinforced levelling compound after treatment of any unevenness and joints between panels
Wood-based panel flooring on joists or battens / parquet nailed on battens ventilated underneath	✓	After treatment of any possible defects on the substrate (unevenness, open joints between planks or panels).
Reversible underfloor heating, max 28°C	✓	Allowed.
Underfloor heating with circulating water, max 28°C	✓	Allowed.
Radiant electric underfloor heating	✗	Prohibited.



[327_{v1}] R-55 Lock + Acoustic

CONDITIONS

SUBSTRATES

ACCESSORIES

INSTALLATION

TOOLS

Utility knife - Tape measure - Metal ruler -
Non-rebound mallet - Romus Ref. 94964 - Pull bar - Tapping block
Mitre shears - Romus Ref. 93401 / Janser Ref. 237,530,000

DIVISION

Romus accessories

FINISHES

Design skirting Ref. 6086 / MDF design skirting Ref. 5947 - See installation guidelines [515] and [516].
Multifunctional threshold: design coverstrip Ref. 0647.
Wet rooms (e.g. bathrooms): MS Polymer or PU sealant.

[327_{v1}] R-55 Lock + Acoustic

CONDITIONS

SUBSTRATES

ACCESSORIES

INSTALLATION



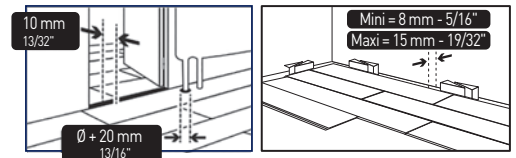
The floor covering should be examined prior to installation for any visible defects. The flooring must belong to the same production batch. If there are any visible defects, please notify GERFLOR and do not begin installation without its prior approval.

LAYOUT

- Mix the planks / tiles from several boxes from the same series.

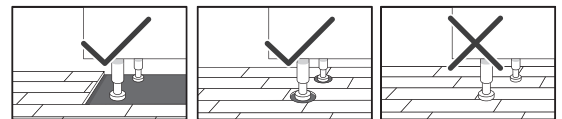
- The planks / tiles must be oriented in the direction of light or in the direction of traffic.

- Perimeter expansion gap: 8 to 15 mm. At room edges, fixed and permanent installations (e.g. columns, island stands) and door threshold (8 mm minimum; over 8 linear meters, increase progressively the perimeter expansion gap up to 15 mm for 20 linear meters). The gap must be covered by a finishing profile.

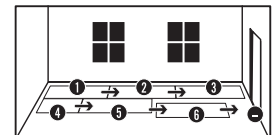


Wet rooms (e.g. bathrooms): MS Polymer or PU sealant under the finishing profile and along the water points (bath, shower tray, toilets).

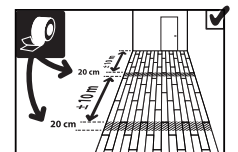
- **Very heavy equipments (kitchen elements, shelves...)** must be installed before the flooring, and the expansion gap must be respected around the equipment's base or feet.



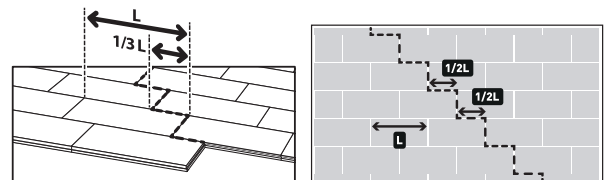
- Start laying the planks/tiles in a corner of the room. Move backwards as you lay, with the grooves facing towards you.



- In case of **narrow room/corridor**, maintain the planks/tiles each 10 lm with a double sided tape (e.g. Fix&Free from Gerflor) to prevent rows from slipping.

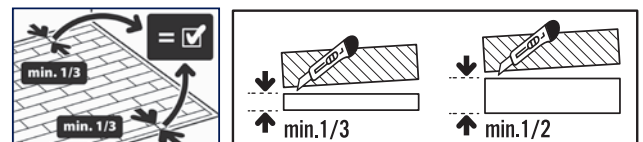


- Offset each row ideally by one third of a plank length, or lay them with "hidden joints". In this case, offset the planks by at least 25 cm, and start the next row with the offcut from the last plank of the previous row. Avoid small cuts at the end of the row.



Lay the tiles in staggered joint (offset by half a tile).

- In standard sections, plank and tile width must be > 1/3 plank or 1/2 tile.



[327_{v1}] R-55 Lock + Acoustic

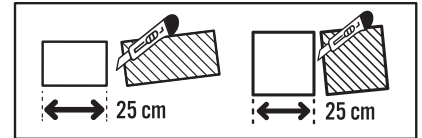
CONDITIONS

SUBSTRATES

ACCESSORIES

INSTALLATION

- At the end of the rows, the length of planks/tiles must be > 25 cm, particularly at the entrances and doorways.



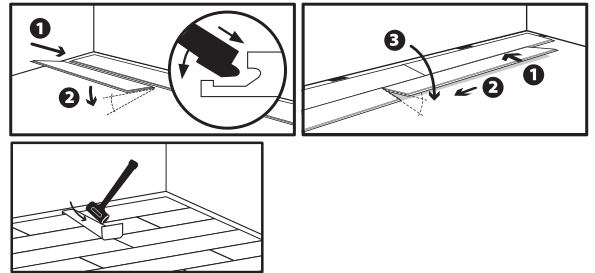
- Never leave the tongues on planks/tiles at room edges

INTERLOCKING AND CUTTING OUT

- Check there are no burrs in the machined groove before interlocking

- Interlock the tiles/planks following the schemes: Start assembling the long edge inserting the tongue into the groove at a slight angle, then carefully position the tongue of the short edge over the groove of the previously installed plank/tile, and assemble the short edges together.

To assemble the last row, use a pull bar and a non-rebound mallet

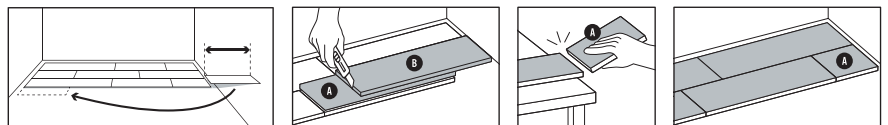


- Make sure that there is no unevenness between planks/tiles.

Incorrect interlocking may lead to imperfect alignment, gaps between tiles/planks, or clic breakage. If necessary, re-adjust the alignment using a tapping block and a plastic hammer.

- Peripheral cutting using the overlapping method.

Offcuts can be re-used at the beginning of a row.



- Cutting at the base of the door frames.

Use high leverage mitre shears.
Romus Ref. 93401 / Janser Ref. 237 530 000.

